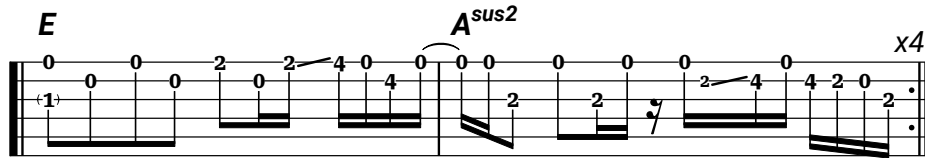


This Side

Nickel Creek

Intro



Verse 1

E C#5 Asus2 B5
One day you'll see her and you'll know what I mean

E C#5 Asus2 B5 C°7
Take her or leave her, she will still be the same

C#m G# Asus2 B5
She'll not try to buy you with her time

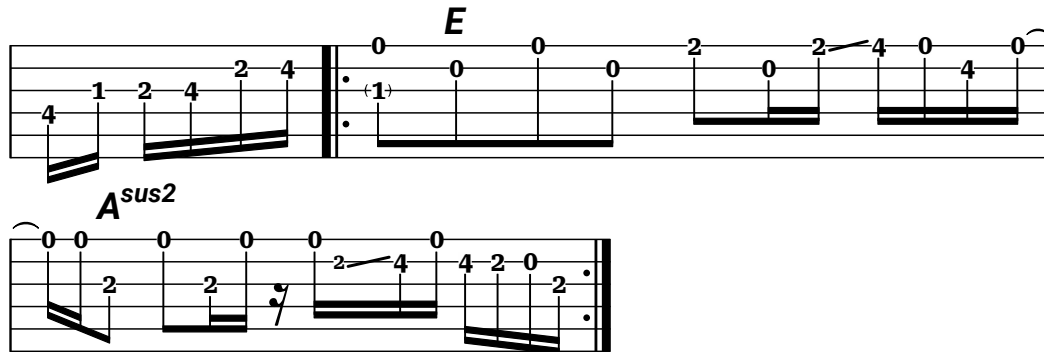
E C#5 Asus2 B5
Nothing's the same as you will see when she's gone

Chorus 1

A* B5 C#5 F#m Asus2
It's foreign on this side, and I'll not leave my home again

B5 C#5 A#°7 Asus2 B5
There's no place to hide, and I'm nothin' but scared

Interlude



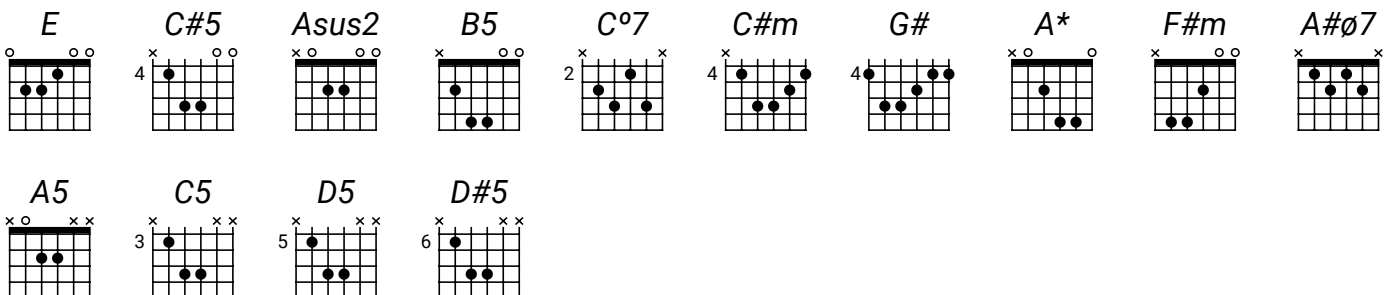
Verse 2

E C#5 Asus2 B5
You dream of colors that have never been made

E C#5 Asus2 B5 C°7
You imagine songs that have never been played

C#m G# Asus2 B5
They will try to buy you and your mind

E C#5 Asus2 B5
For only the curious have something to find



Chorus 2 | **A*** **B5** **C#5** **F#m** **Asus2**
 It's foreign on this side, and the truth is a bitter friend
B5 **C#5** **A#ø7** **Asus2**
 Reasons, few have I to go back again

Mand. Solo | **C#m** **A#ø7** | x3
Asus2 |

Violin Solo | **B5** | **C#5** | **F#m** **Asus2** |
B5 | **C#5** **A#ø7** |
A5 **B5** **C5** **C#5** **D5** **D#5** | (regular power chords)

N.C.

Verse 3 Your first dawn blinded you, left you cursing the day
C°7
 Entrance is crucial and it's not without pain
C#m **G#** **Asus2** **B5**
 There's no path to follow once you're here
E **C#5** **Asus2** **B5**
 Climb up the slide and then you'll slide down the stairs

Chorus 3 | **A*** **B5** **C#5** **F#m** **Asus2**
 It's foreign on this side, but it feels like I'm home again
B5 **C#5** **A#ø7** **Asus2**
 There's no place to hide, but I don't think I'm scared
B5 **C°7** **C#5**
 (There's no place to hide), but I don't think I'm scared
A#ø7 **Asus2** **B5**
 (There's no place to hide), but I don't think I'm scared

Outro **E** **A^{sus2}**